

SD-XHU
4K@60 Video Capture

SEADA

Showing the World



User Manual

Contents

Introduction	1
Packaging accessories	1
Product introduction	1
Product interface introduction	1
Product specification	2
Product connection	2
Product Instruction	3
(1) Capture Settings for OBS Software	3
in Windows system	
(2) Suggested parameters for recording video by OBS	5
software (no need to set if not recording video)	
(3) Windows POTPLAYER software setting parameters	7
(4) Suggested parameters for recording video by	8
POTPLAYER software(no need to set if not recording video)	
(5) Sound capture method of capture card in Windows system	9
(6) Capture and setting method of OBS software in MAC system	11
(7) Sound capture method of OBS software in MAC system	13
Tips	16
Cautions	16
Fitting requirement	17
Environmental protection	17

Product Overview

Dear customers, thank you for purchasing our product. In order for you to further understand the product. Please read this manual carefully before use.

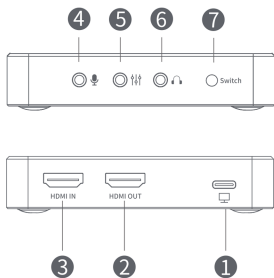
Package Contents

- 4K60 Video Capture
- 100cm C to A Cable

Product Introduction

- Input 4K-60Hz downward HDMI video signal
- Loop out 4K-60Hz downward HDMI video signal
- USB acquisition 4K-60Hz downward
- Support audio MiC microphone/Audio headset/LineIN mixer
- Air cooled heat dissipation&metal heat conduction&lateral grid, no scalding
- Switch button, light fan can switch freely
- Low power consumption design, all aluminum alloy material
- Support common standard resolution video formats

Product interface introduction



- | | |
|------------------------|-------------|
| ① Type-C port | ⑤ Line IN |
| ② HDMI OUT(Loop out) | ⑥ Audio OUT |
| ③ HDMI IN (HDMI Input) | ⑦ Switch |
| ④ Mic IN | |

Note: 1. Click the Switch twice to control the light switch.

2. Tap the Switch once to control the fan switch.

Specifications

Product	4K60 Video Capture
Model	SD-XHU
Weight	152.9g
Material	Aluminum
Dimension	99*79*20mm
System	Supports Windows 7/8/10/11.Vista.linux.macOS 10.3 or later
Matters needing attention	The acquisition card product must be connected to the interface above USB3.0 of the computer host and connected to the corresponding port of the acquisition card

This video capture card Stream and Record your video in 4K60 or 2K144,1080P240

Support Video Format	4K60 MJPEG 4K30 NV12 2K144 MJPEG 2K60 NV12 2K50 YUY2 1080P240 MJPEG 1080P120 NV12 1080P60 YUY2/RGB
----------------------	--

HDR and VRR Support Up to 4K60

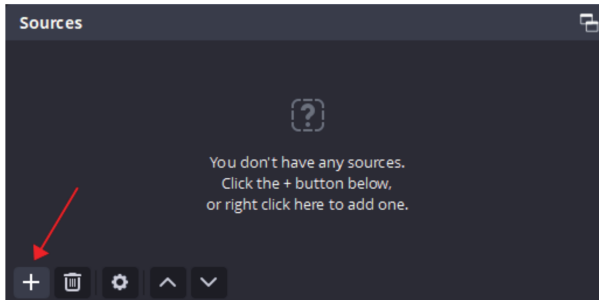
Product connection



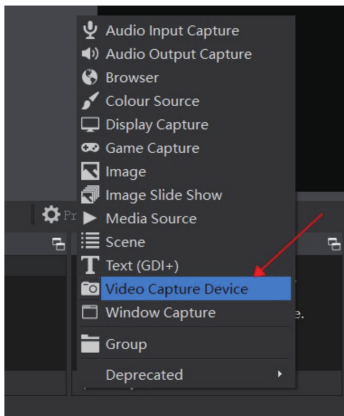
Product Instruction

(1) Capture Settings for OBS Software in Windows system.

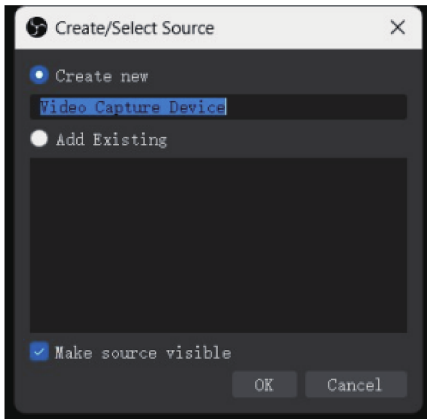
- ① Open the OBS software screen
- ② Click on Sources +



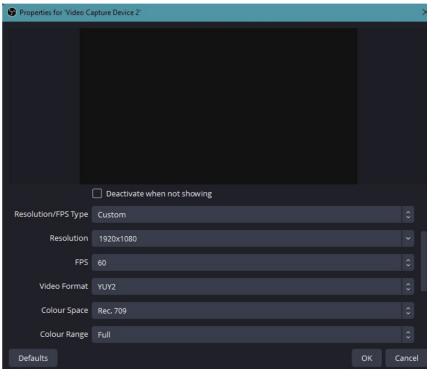
- ③ Then select the "Video Capture Device"



- ④ You can create a new source or select an existing device name, and then click "OK" at the bottom.

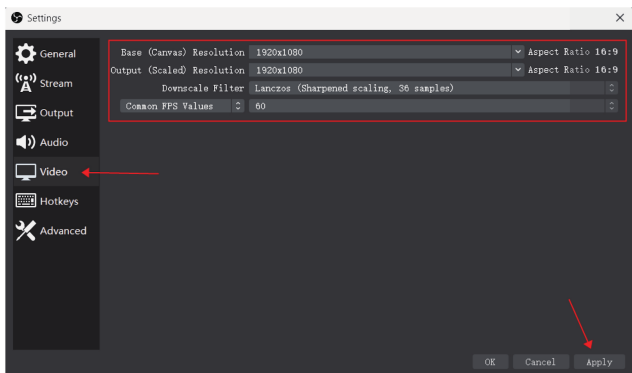
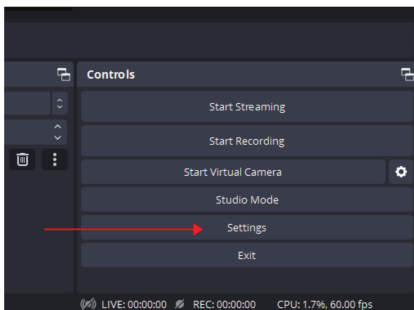


- ⑤ Then open the properties for "video capture device", select "custom" for resolution/FPS Type, "1920×1080" for resolution, "60" for FPS, "YUY2" for video format, "REC.709" for color space, and "full" for color range. Finally, select "OK" to save the Settings.

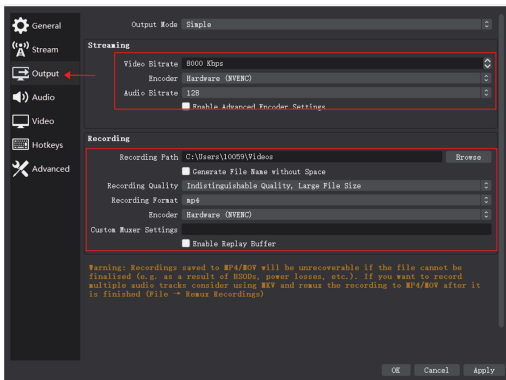


(2) Suggested parameters for recording video by OBS software (no need to set if don't record video)

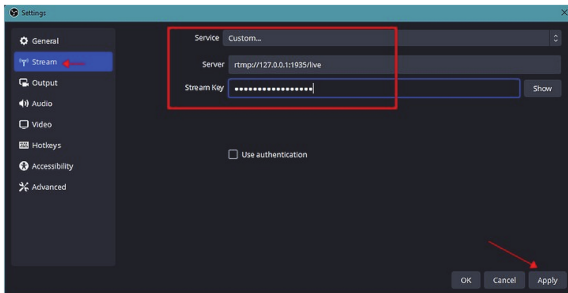
- ① Find "Settings" in the lower right corner of the software page, select "video", select "1920x1080" for Base (Canvas) Resolution, and select "1920x1080" for Output (Scaled) Resolution. Select "Lanczos (Sharpened scaling, 36 samples)" for Downscale Filter. Select "60" for Common FPS Values.



- ②1. For the user who uses "Streaming", please click "Output" to set the "8000 Kbps" for Video Bitrate, "Hardware (NVENC)" for Encoder, "128" for Audio Bitrate.
2. For "Recording" users, the recording path & recording quality (affecting the screen quality) can be set, "Indistinguishable Quality, Large File Size" for Recording Quality. "MP4" for Recording Format, which is more compatible with more players and APP video software. Finally, "Hardware (NVENC)" for Encoder (No need for live streaming and recording can be ignored)



3. The user who uses "streaming" can enter the "stream key" of the live streaming platform and click on the bottom right corner of OBS to start the "Streaming". (No need for streaming can be ignored).

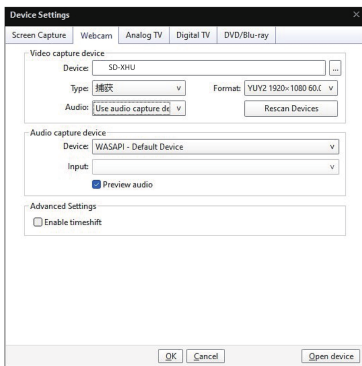


(3) Windows POTPLAYER software setting parameters (with OBS software can only choose one)

- ① Open "DaumPotPlayer", click "PotPlayer" in the upper left corner, select "Open", and select "Device Settings".

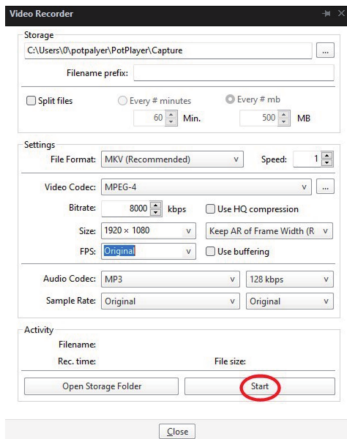
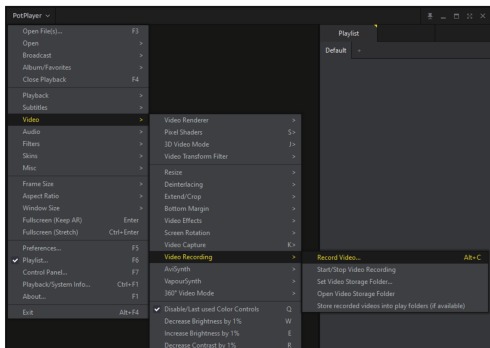


- ② After selection, enter the "property setting", select "Webcam", select the corresponding property in the list, and the format can be freely selected according to user needs, as shown in the figure:



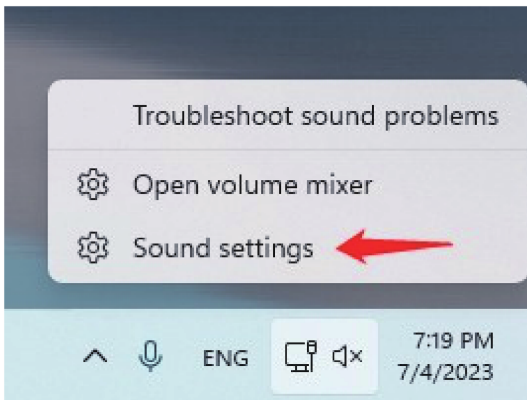
(4) Suggested parameters for recording video by POTPLAYER software (no need to set if no recorded video)

- ① Users who need to record can select "PotPlayer", select "video", select "video recording", and "record video", then select the corresponding properties according to the needs of users, and click Start. As the picture shows:

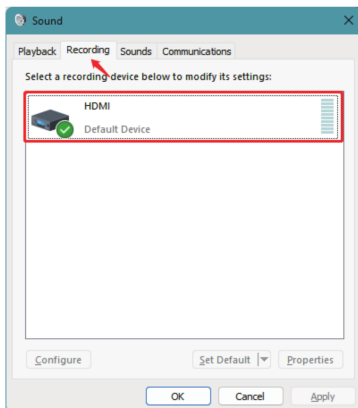


(5) Sound capture method of capture card in Windows system

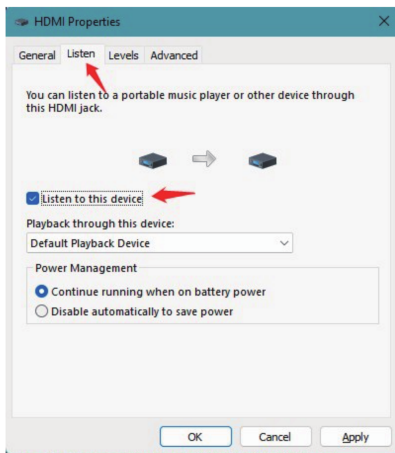
- ① Right-click the small speaker symbol in the lower right corner of the computer desktop, click "sound properties"



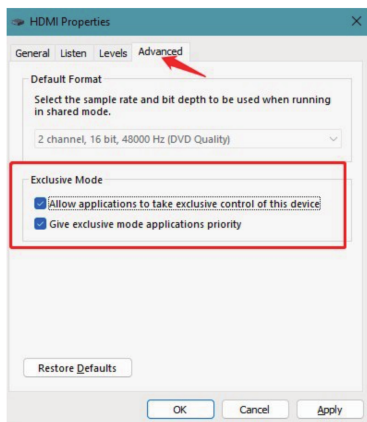
- ② Click "Recording", and then right-click the "audio" properties



- ③ Select "Listen", "listen to this device" by ticking.

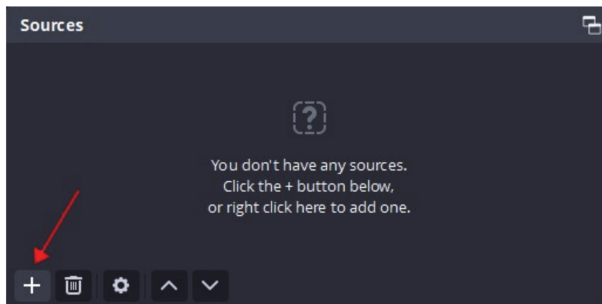


- ④ Click "Advanced" to check whether the "exclusive mode" is ticked, which needs to be ticked.

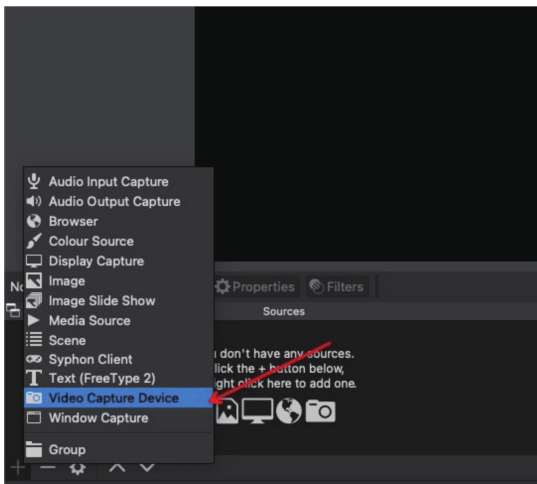


(6) Capture Settings for OBS Software in the MAC system.

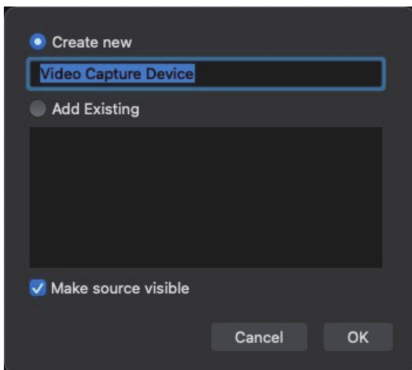
- ① Open the OBS software screen
- ② Click on Sources +



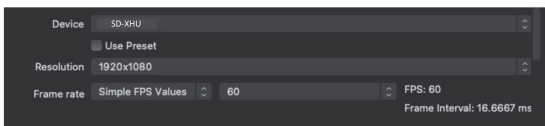
- ③ Then select the "Video Capture Device"



- ④ You can create a new source or select an existing device name, and then click OK at the bottom.

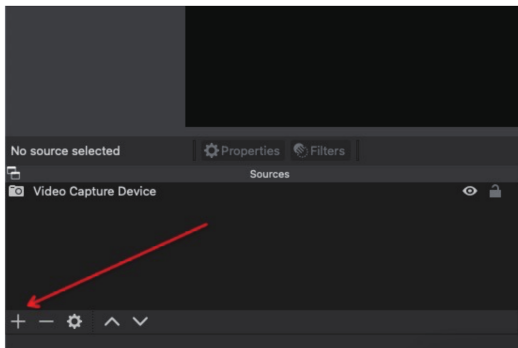


- ⑤ Then a corresponding attribute parameter table will be created. We need to uncheck "use preset", set the "resolution" to "1920×1080", and set "frame rate" to "simple FPS Values", set "FPS" to 60.

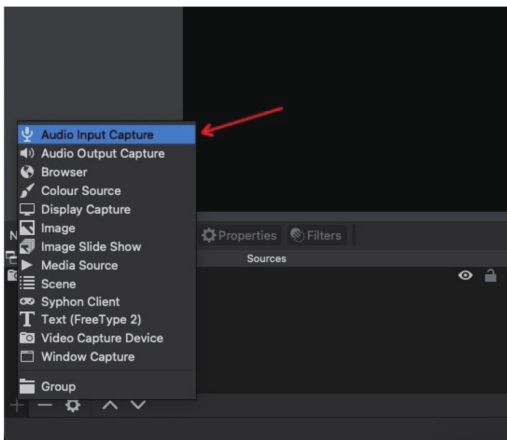


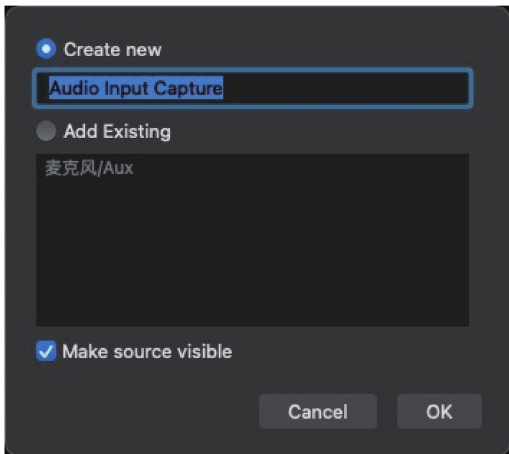
(7) Sound capture method of OBS software in MAC system

① Click on Sources +

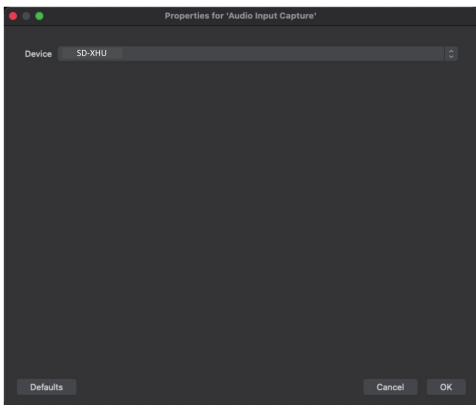


② Then select "Audio Input Capture"

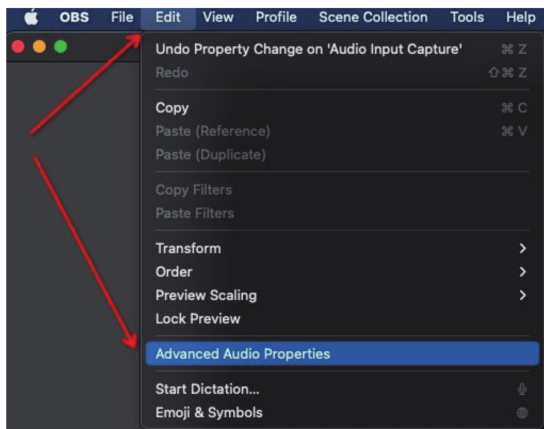




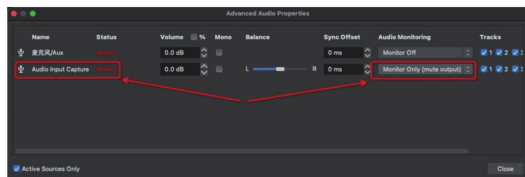
③ Then select the name of the device "Audio"



- ④ Then click Edit in the upper left corner of OBS software to select "Advanced Audio Properties"



- ⑤ Then select " Monitor Only" in Audio Monitoring



Tips

1. The main function of the capture card is to enable your device's picture and sound to be output to the computer for use, and to enable the device to output higher resolution and frame rate (based on the highest resolution your device can output and the highest resolution supported by the capture card).
2. Please confirm whether the computer has an interface that meets the requirements of the acquisition card.
3. The acquisition card is recommended to collect pictures and sounds after the wiring is completed.
4. After a period of use, the collection card has fever, which is a normal phenomenon of electronic products, please do not worry about the use of problems.
5. The product itself has certain technical characteristics. If the operation fails according to the instruction manual or there is any problem with the use, you can contact the customer service at the purchasing shop, we will arrange technical 1-1 service and remote debugging.

Cautions

- Please avoid use in high temperature, low temperature, wet, dusty and long-term exposure to sunlight.
- Do not place the product in an environment with corrosive substances, and do not use other chemical solutions to clean the product.
- Keep the product out of reach of children and do not allow children to use the product unsupervised.
- Do not disassemble or repair the products and accessories without authorization.
- Gently clean the product with a dry cloth.

Fitting requirement

- Use of unauthorized or incompatible power supplies, accessories that may cause fire, explosion or other hazards;
- Only accessories approved by the equipment manufacturer and compatible with this model can be used. If you need approved accessories, please contact customer service.

Environmental protection

- Do not dispose of the equipment and its accessories as ordinary household garbage;
- Please comply with local laws governing the disposal of this device and its accessories and support recycling.

Support

If you have any questions, please contact our customer support:
support@acasis.com.

Copyright

No part of this user manual may be reproduced or transmitted for any purpose, regardless in which way or by any means, electronically or mechanically, without the explicit written approval of ACASIS.

Thank you