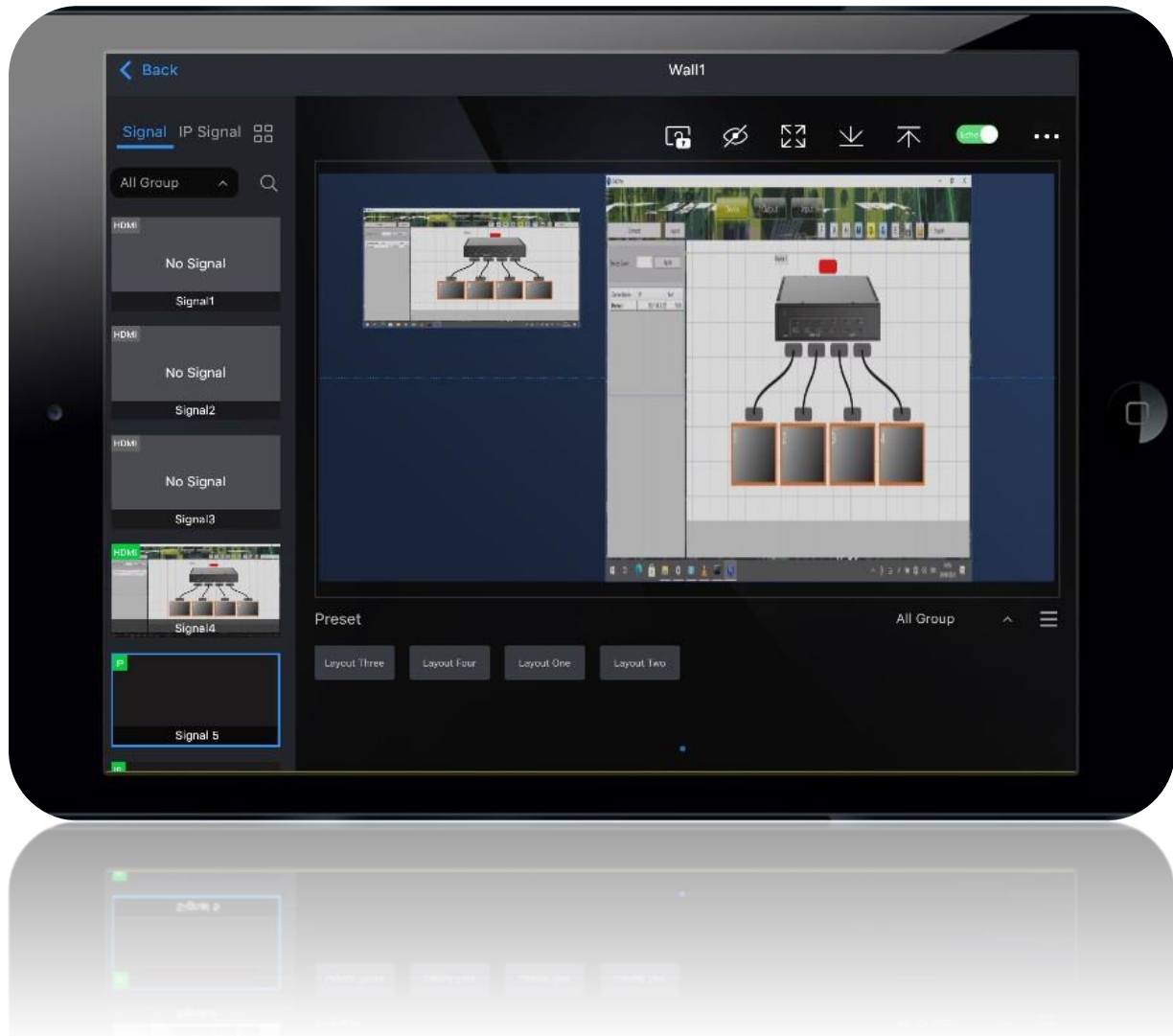


SolarWall Pro Pad App User Manual (SWPro)

Document No. SD-MA-035

Document Version: 02



Note:

SWPro is an iPad or Android pad app to remote control SEADA's SolarWall Pro video wall controllers. SWPro can recall preset layouts, open/close input windows, resize and move the windows. SWPro is also able to preview all input videos on Pad.

SWPro is an app to control the SWPro controller for daily operation. However, users still need Windows Based SWPro software to set up the controller and video wall.

Contents

1. Installation
2. Communication setting
 - 2.1. System Connection
 - 2.2. Set Up Static IP address on Pad
 - 2.3. IP address Configuration on SWPro
3. Operation
 - 3.1. Connection
 - 3.2. User Interface
 - 3.2.1. Pre-set layouts
 - 3.2.2. Preview Bar
 - 3.2.3. Video Wall Display Area
 - 3.2.4. Toolbar

1. Installation



Please find 'SWPro' app in Apple Inc App store and install it on the iPad for free.
Please install the APK on Android Pad for the app.

2. Communication setting

2.1. System Connection

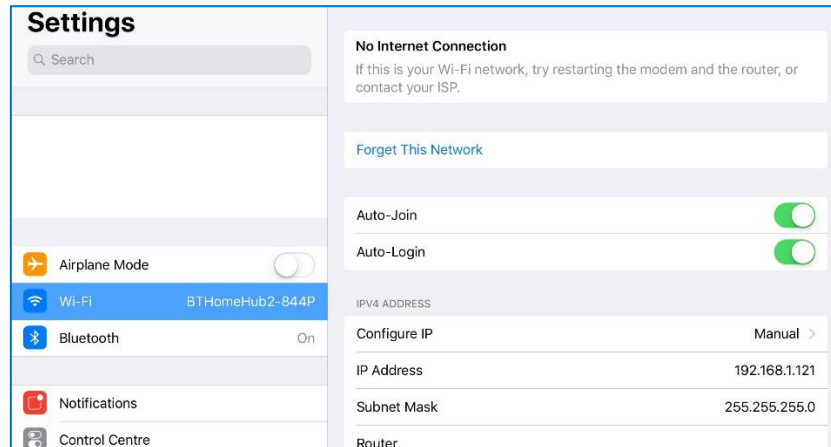


- Connect SWPro controller to wireless router via network cable
- Connect Pad to the wireless router

2.2. Set Up Static IP address on Pad

This section is to set up the communication protocol between Pad and SEADA Video Wall Controller.

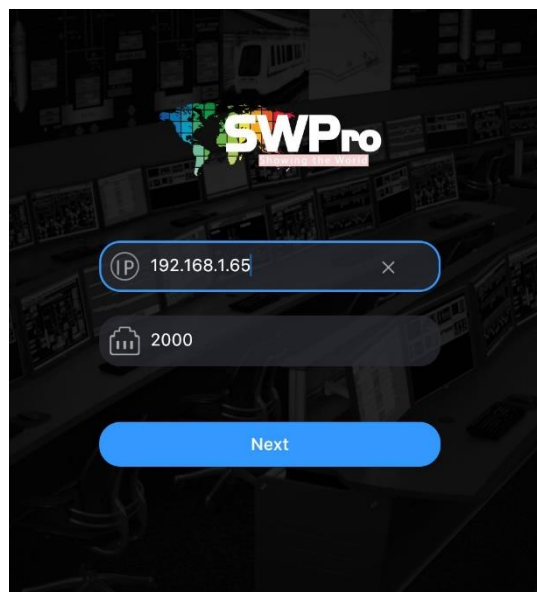
- The SolarWall Pro Controller’s default static IP address is **192.168.1.65**, Port: **2000** and subnet Mask: **255.255.255.0**, Users need to change the IP address of Pad to the same IP group of SolarWall.
- In Pad, **Settings**----**WiFi**----Current WiFi Configuration



- Change the Configure IP from 'Automatic' 'to Manual' in IPV4 ADDRESS
- to 'Use the following IP address' to set up a static IP address of TCP/IPv4 for Pad
 - IP address: any address between 192.168.1.2 and 192.168.1.254 except the address which has been taken by the SolarWall controller
 - Subnet mask: 255.255.255.0, Default Gateway: 192.168.1.1

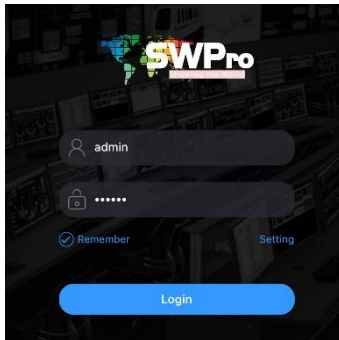
2.3. IP address Configuration on SWPro

- Open the SWPro app and press the **Setting** to open the IP configuration Dialog box. Set the IP address and Port (2000 is the port) for SWPro controller and press Next button to be back to the main interface.



3. Operation

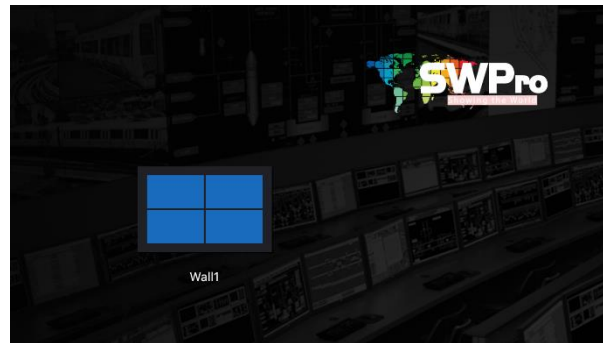
3.1. Connection



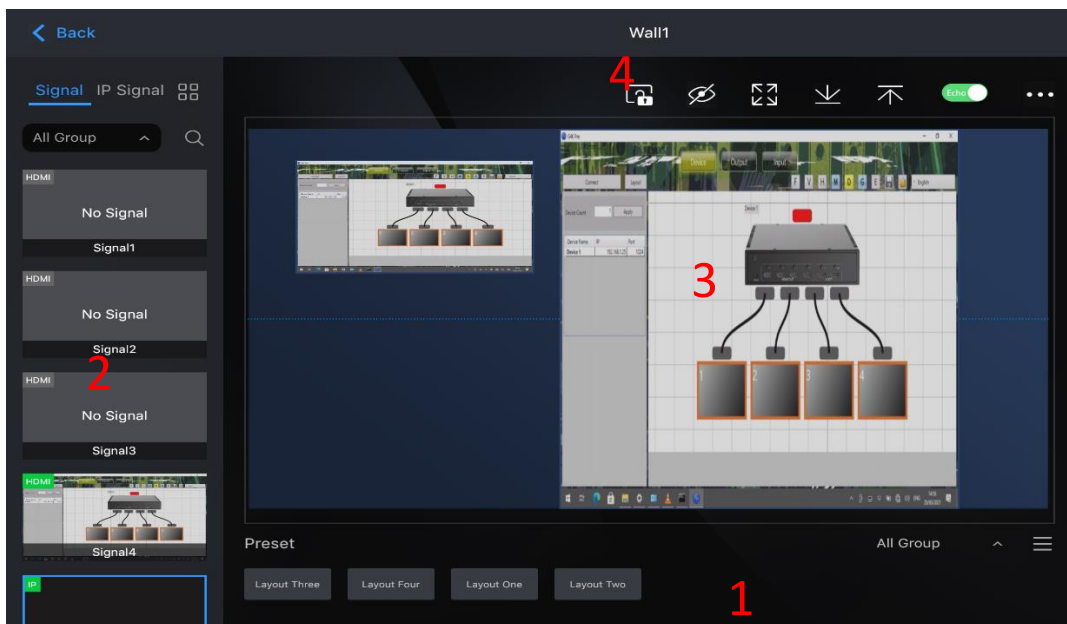
Type in Username and Password and Press the ‘Login’ button to connect the Pad to the SWPro controller. Once it is connected, all the configured video wall will be displayed on screen.

Note: if connection cannot be created, please follow 2.1-2.3 to make sure all the settings are correct.

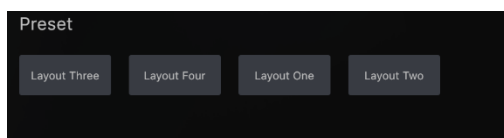
Since SWPro controller can support up to 160 video walls which can be set up in Windows Based SWPro Software, SWPro will show all the video walls the controller has been set up. Double tap on the video wall which will be managed to open the operation user interface.



3.2. User Interface

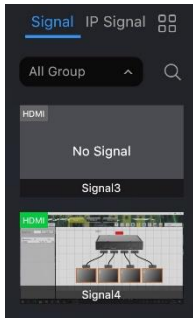


3.2.1. Pre-set layouts



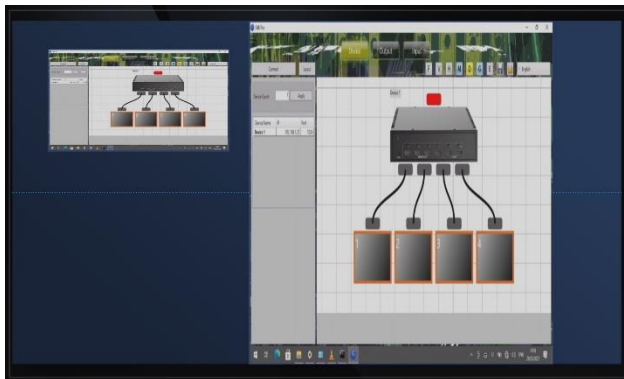
It shows all the preset layouts saved using Window based SWPro software on this very SWPro video wall controller. Users can recall the preset layout by tapping the very layout.

3.2.2. Signal Bar



Users are able to preview the video source of all the input sources here. user can drag and drop the signal from this section to video wall display area and display the input video source onto video wall.

3.2.3. Video Wall Display Area



Video Wall Display Area, users are able to manipulate the windows on video walls in Video Wall Display Area.

Users can open, close and resize the windows.

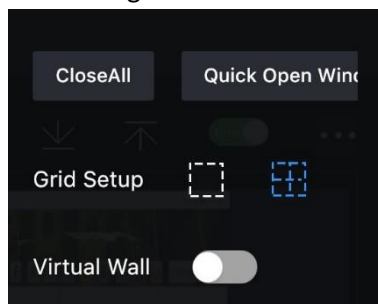
To open window on video wall, users can choose the input in Signal Bar (3.2.2), press & hold the input and then move it to the Video Wall Display Area. And user can use two fingers to resize the window.

Users can close all the input windows by press & hold the window and move the window out of Video Wall Display Area.

3.2.4. Tool bar



- Lock Lock/unlock the opened windows on video wall display area
- Detail Turn on/off detail on each opened window
- Bottom Send the current window to bottom
- Top Bring the current window onto top
- Echo Turn on/off the preview
- Full Maximize the Video Wall Display Area
- Setting



- CloseAll Close all the windows
- Quick Open Window Open the highlighted signal
- Grid Setup Set up the grid for each screen
- Virtual Wall LED video wall

SEADA Technology Ltd
Oak Tree Park
Burnt Meadow Road
Moons Moat North Industrial Estate
Redditch
Worcestershire
B98 9NW
United Kingdom
Email: sales@seada.co.uk
Phone: +44 (0)1527 584364
Fax: +44 (0)1527 962998

